

CENTRAL GLASS GROUP AT A GLANCE



Locations & Accreditations

- Japan (cGMP: FDA & PMDA Inspected, ISO9001, ISO14001, OHSAS18001)
- Germany (cGMP: FDA & EU Inspected, ISO14001)
- UK (ISO9001, ISO14001, AEO & Known Consignor Status)
- USA
- Ecovadis rating: Germany - Gold. Central Glass Ube Plant - Gold.



Production Facilities

- Reactors from lab scale to 7kL (Inc. SUS, GL, PFA & Hastelloy)
- High pressure reactors up to 10L
- Flow reactors for R&D/Medium scale production
- Distillation equipment includes spinning band & Wiped Film Evaporator
- Operational temp ranges from -80 deg C to +280 deg C
- Cleanroom ISO 8 API manufacturing capabilities
- Full analytical suites (inc. GC, HPLC, GC-MS, LC-MS, (U)HPLC with UV-, RI-, Fluorescence-, ELSD- and CAD detection, NMR, IR, KF, GPC, UV, XRD, ICP-MS, ICP-AES, Ion Chromatography, DSC)



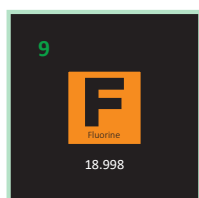
Core Technology Competencies

- Continuous reaction
- Batch reaction
- High pressure reaction
- Cryogenic reaction
- Distillation expertise
- High volume fluorination
- Pyrogenic reaction
- Gas Handling
- Phosgenation



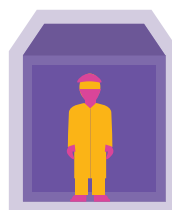
Business Models

- Catalogue compounds (over 20k in stock)
- Custom Synthesis
- Bulk supplies
- Small scale manufacturing/clinical phase I - III supplies
- Large scale manufacturing
- Contract Research & Development
- Contract/ toll manufacturing



Fluorination Expertise

- Selective halax reaction by HF
- Electrochemical fluorination
- Direct fluorination by F2 Gas
- Triflic acid & triflate reaction
- Deoxyfluorination (SF4/DAST etc)
- Trifluoromethylation
- Difluoromethylation
- Balz-Schiemann
- KF exchange



Product Group Strengths

- Substituted aromatic & heterocyclic building blocks/intermediates
- Aliphatic compounds
- Gases
- Fluorinated chiral compounds
- Fluorinating reagents
- API production under GMP (8 API's manufactured to date)
- Key fluorination technology allows us to offer many unique fluorinated compounds, alongside a vast number of non-fluorinated compounds

Find the right chemistry. **Speak to us today.**